

LEEDS  
CONSERVATOIRE

BA (HONS) ACTOR MUSICIAN  
CLOTHING & EQUIPMENT REQUIREMENTS





# YEAR ONE

In putting together our kit list, we've tried to keep things simple. We hope that there is lots of general items you will already have, can get on a student budget, or borrow from your Year 2 Student Mentor. Actor training is messy, so no need for brand new clothes.

If you do need to buy things, buy things that are multi-purpose and serve most skills classes.

This kit list is deliberately not gendered. Where there is an option, make the choice that makes you feel most comfortable.

## REHEARSAL CLOTHING

### ALL STUDENTS

- Plain, dark coloured tops
- Plain, dark coloured bottoms
- Trainers
- Plain coloured warm sweater or hoodie for cold weather

Rehearsal clothing is defined as: loose fitting, plain, unbranded, dark clothing. Clothing should not be so loose as to provide a trip hazard or likely to get caught in contact work.

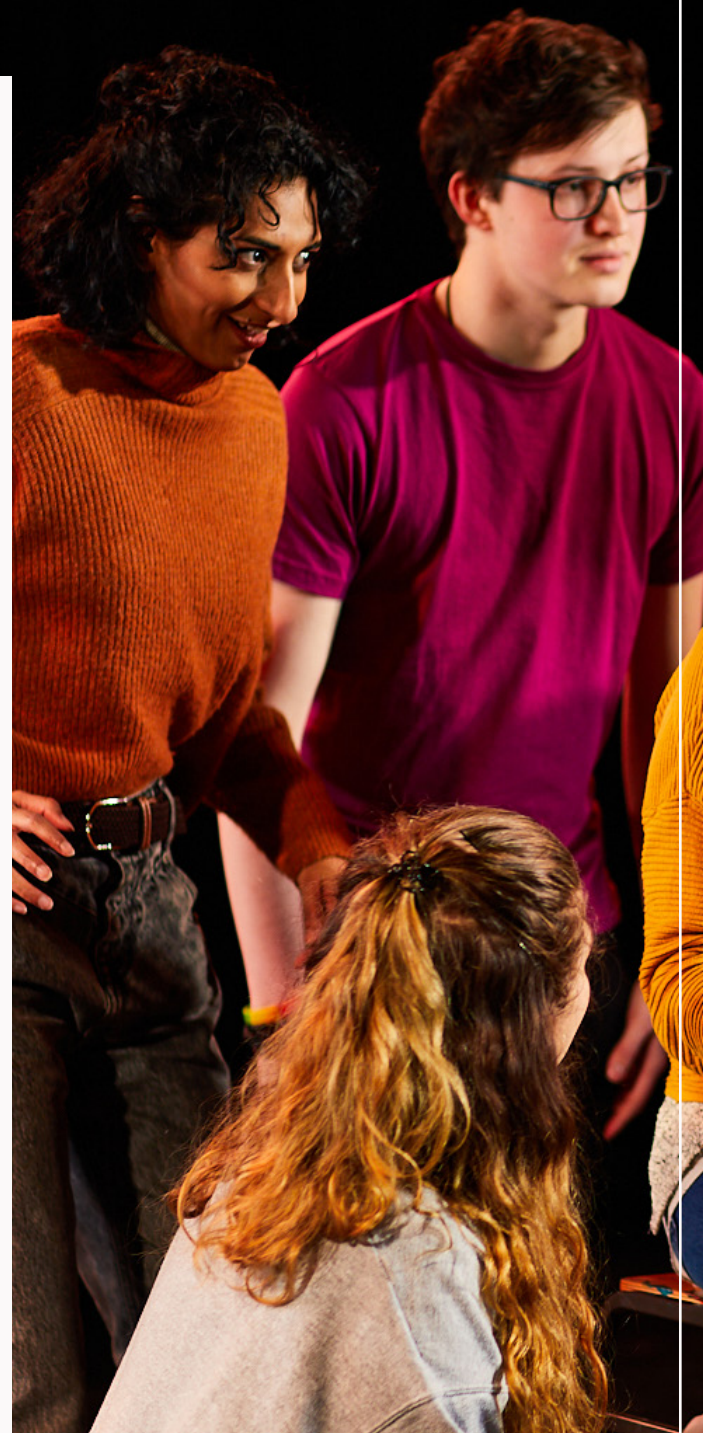
Basic cotton t-shirts or vests, jogging bottoms or leggings are ideal.

NB. Avoid jeans and very tight-fitting clothes, these limit mobility and can tear. All tops and t-shirts should cover the midriff and not be low cut.

## BODY CONDITIONING / DANCE / MOVEMENT CLOTHING

### ALL STUDENTS

- Support underwear (sports bra or support underwear/jock strap/dance belt)
- Sports top, slim fit t-shirt or vest
- Leggings, jogging/tracksuit bottoms or shorts.
- Trainers
- Black ballet shoes or black split sole jazz shoes or black plimsoles
- Hair elastics, hair pins/grips, etc. Those with long hair are expected to put their hair up for body conditioning/movement/dance classes.



These items should be unbranded and dark in colour.

All tops and t-shirts should cover the midriff and not be low cut. Team sports tops and hats are not allowed to be worn in any class. If buying sportswear for the beginning of term, opt for unbranded where possible.

Trainers are for body conditioning. Most Movement/Dance Skills classes can be done barefoot. However, when using external venues or if injury occurs to the feet, you may require a soft dance shoe that is only worn inside: a black ballet shoe, black split sole jazz shoe or black plimsole are all fine.



### CLASSICAL ACTING PROJECTS

- Black Full-Length Practice Skirt OR Black Dress Trousers
- Black Character Shoes OR Black Dress Shoes with hard heel
- Plain White Fitted Shirt
- **NOT ESSENTIAL BUT USEFUL:** Black Blazer or Black Suit Jacket

For traditional acting contexts, more formal clothing is useful as it impacts movement and can inform character. These projects are in house, without a paying audience so second-hand clothing is absolutely fine.

### GENERAL EQUIPMENT

#### ALL STUDENTS

- Primary instrument
- Instrument specific spares: reeds, strings, mouthpieces etc.
- Drumsticks [percussion students only].

With the exception of students who play only piano and/or percussion at point of entry, you will be required to bring your primary instrument and maintain it for use throughout your training.

The department has a stock of instruments to assign students as they learn and acquire further instrumental skills. As these instruments become primary, students are encouraged to purchase their own for use in Year 3 production and professionally post-graduation.

### TECHNOLOGY

#### ALL STUDENTS

- Smartphone
- Laptop or tablet

It is useful, although not essential, for your mobile phone to be a smartphone so that your Conservatoire email can be enabled and accessible at all times. Conservatoire systems have mobile functionality so smartphones make access to those easier too.

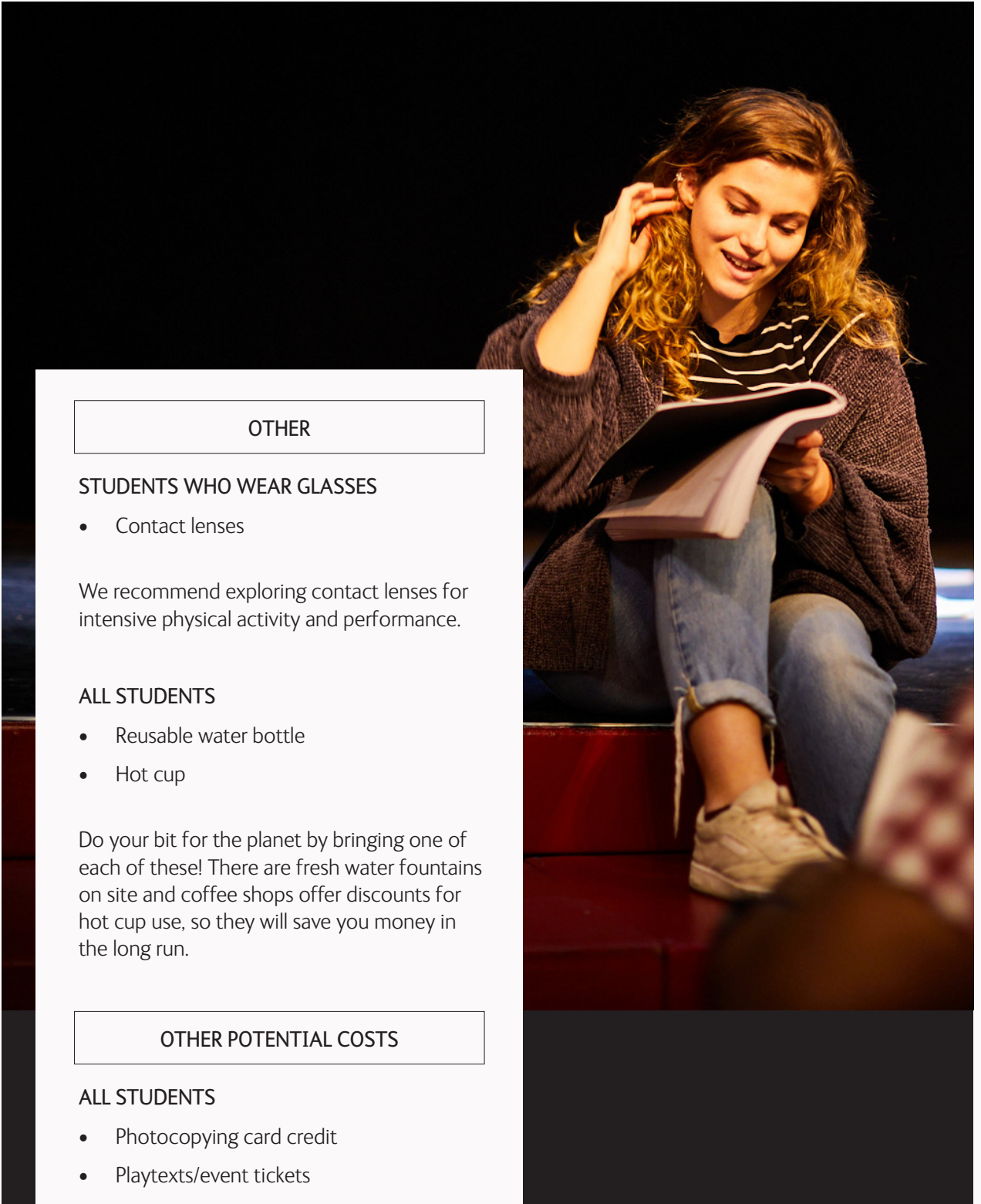
There are PCs on site that you are able to use. However, your own laptop or tablet to work remotely will be essential as the course progresses.

### GENERAL EQUIPMENT

#### ALL STUDENTS

- Yoga mat
- Towel
- Notebooks
- Pens/pencils
- Sharpener/eraser
- Highlighters
- Folders/plastic wallets





## OTHER

### STUDENTS WHO WEAR GLASSES

- Contact lenses

We recommend exploring contact lenses for intensive physical activity and performance.

### ALL STUDENTS

- Reusable water bottle
- Hot cup

Do your bit for the planet by bringing one of each of these! There are fresh water fountains on site and coffee shops offer discounts for hot cup use, so they will save you money in the long run.

## OTHER POTENTIAL COSTS

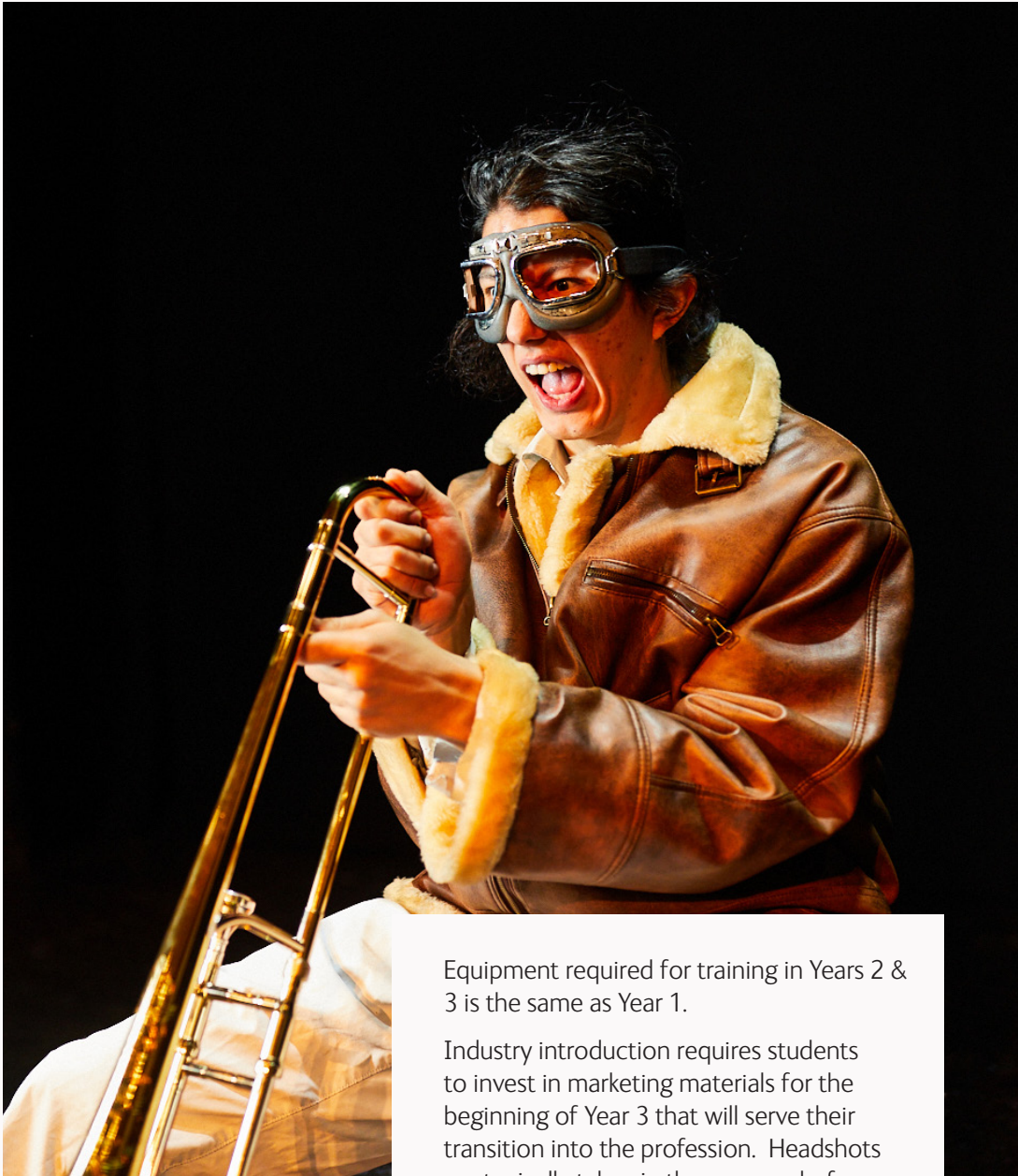
### ALL STUDENTS

- Photocopying card credit
- Playtexts/event tickets

Where the play is part of the curriculum a copy will be made available. However, you will be expected to develop your own practice of reading plays, watching television series and live performance.

The library has a good selection of texts and everything in your reading list. You also have Drama Online access but it is worth becoming practiced in budgeting for engagement with the arts industry long term.

# YEAR TWO & THREE



Equipment required for training in Years 2 & 3 is the same as Year 1.

Industry introduction requires students to invest in marketing materials for the beginning of Year 3 that will serve their transition into the profession. Headshots are typically taken in the summer before Year 3 begins as Spotlight graduate deadlines are in September.

Listed below are current industry standard requirements and associated costs as of August 2022.

Actors' headshots: £150 - £500

Graduate Spotlight Membership: £114

Travel to venues/meetings: £100 - £300




---

Leeds Conservatoire  
3 Quarry Hill, Leeds, LS2 7PD

---

Telephone: +44 (0)113 222 3400  
[www.leedsconservatoire.ac.uk/contact](http://www.leedsconservatoire.ac.uk/contact)

---

 LeedsConservatoire  
 @LeedsMusicDrama  
 @leedsmusicdrama